

AGENDA

Meeting: SOUTH WEST WILTSHIRE AREA BOARD
Place: Nadder Hall, Weaveland Road, Tisbury, SP3 6HJ
Date: Wednesday 5 October 2011
Time: 7.00 pm

Including the Parishes of Alvediston, Ansty, Barford St. Martin, Berwick St John, Berwick St Leonard, Bishopstone, Bowerchalke, Broad Chalke, Burcombe Without, Chicklade, Chilmark, Compton Chamberlayne, Dinton, Donhead St Andrew, Donhead St Mary, East Knoyle, Ebbesbourne Wake, Fonthill Bishop, Fonthill Gifford, Fovant, Hindon, Kilmington, Mere, Netherhampton, Quidhampton, Sedgehill and Semley, South Newton, Stourton with Gasper, Stratford Toney, Sutton Mandeville, Swallowcliffe, Teffont, Tisbury, Tollard Royal, West Knoyle, West Tisbury, Wilton and Zeals.

The Area Board welcomes and invites contributions from members of the public. The chairman will try to ensure that everyone who wishes to speak will have the opportunity to do so.

If you have any requirements that would make your attendance at the meeting easier, please contact your Democratic Services Officer.

Refreshments and networking opportunities will be available from 6:30pm.

Please direct any enquiries on this Agenda to Lisa Moore (Democratic Services Officer), on 01722 434560 or email lisa.moore@wiltshire.gov.uk

or Richard Munro (South West Wiltshire Community Area Manager), Tel: 01722 434211 or (email) richard.munro@wiltshire.gov.uk

All the papers connected with this meeting are available on the Council's website at www.wiltshire.gov.uk

Press enquiries to Communications on direct lines (01225) 713114 / 713115.

Wiltshire Councillors

Cllr Bridget Wayman – (Chairman)	Nadder and East Knoyle
Cllr Josephine Green – (Vice-Chairman)	Fovant and Chalke Valley
Cllr Richard Beattie	Wilton and Lower Wylde Valley
Cllr Tony Deane	Tisbury
Cllr George Jeans	Mere

Items to be considered	Time
<p>1. Welcome and Introductions</p>	7.00pm
<p>2. Apologies for Absence</p>	
<p>3. Declarations of Interest</p> <p>Councillors are requested to declare any personal or prejudicial interests or dispensations granted by the Standards Committee.</p>	
<p>4. Minutes (Pages 3 - 18)</p> <p>To confirm as a correct record and sign the minutes of the previous meeting held on Wednesday 24 August 2011.</p>	
<p>5. Matters Arising</p> <p>The Board will discuss any matters arising from the minutes of the last meeting.</p>	
<p>6. Chairman's Announcements (Pages 19 - 20)</p> <p>To receive Chairman's Announcements including:</p> <ul style="list-style-type: none"> • Home Insulation Scheme 	7.10pm
<p>7. Tisbury Campus</p> <p>The Board will receive an update from the Shadow Campus Operational Board.</p> <p><i>Councillor Deane</i></p>	7.20pm
<p>8. Updates from Partners (Pages 21 - 32)</p> <p>The Board will receive verbal updates from partners present, some written updates are attached.</p>	7.40pm
<p>9. Community Area Transport Group (CATG) (Pages 33 - 40)</p> <p>The Board will be briefed on the latest meeting and will receive recommendations for further action.</p> <p>The Board will vote whether to fund the purchase of a Speed Indicator Device (SID) as recommended at the last meeting on 24 August 2011.</p> <p><i>Councillor Dean</i></p>	7.50pm

- | | |
|--|---------------|
| 10. Community Area Grants (<i>Pages 41 - 46</i>) | 8.15pm |
| The Board members will consider three applications for funding from the Community Area Grants Scheme: | |
| <ul style="list-style-type: none">• Semley Village Stores• Wessex Community Action• Mere Bowls Club | |
| <i>Officer: Richard Munro, Community Area Manager</i> | |
| 11. Update from Community Area Partnership | 8.45pm |
| The Board will receive an update from the Wilton Community Area Partnership (WilCAP). | |
| 12. Update on Issues | 8.50pm |
| To receive an update on the progress of issues to date. | |
| <i>Officer: Richard Munro, Community Area Manager</i> | |
| 13. Evaluation and Close: (<i>Pages 47 - 48</i>) | 9.00pm |
| A copy of the Forward Plan is attached for information. | |

Future Meeting Dates

Wednesday 7 December 2011

7.00pm

Wilton Community Centre

Wednesday 15 February 2012

7.00pm

The Grove Buildings, Mere

Wednesday 11 April 2012

7.00pm

Charlton Remembrance Hall

Wednesday 13 June 2012

7.00pm

Wilton Community Area

Wednesday 15 August 2012

7.00pm

Mere Community Area

Wednesday 17 October 2012

7.00pm

Nadder Hall, Tisbury

Wednesday 5 December 2012

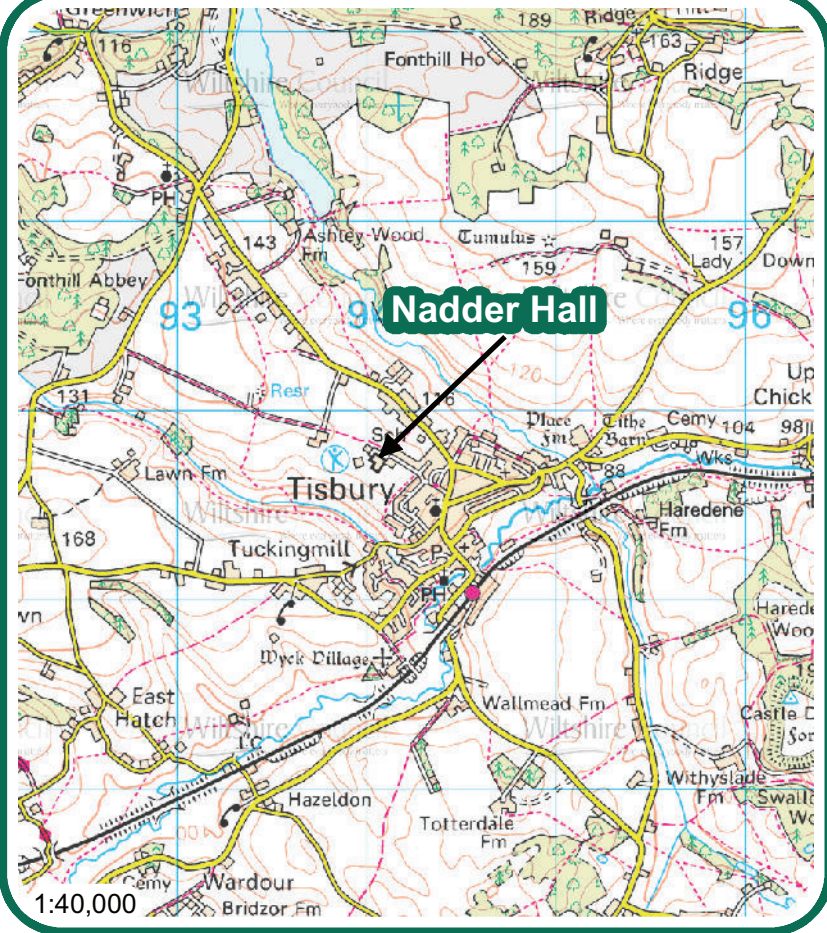
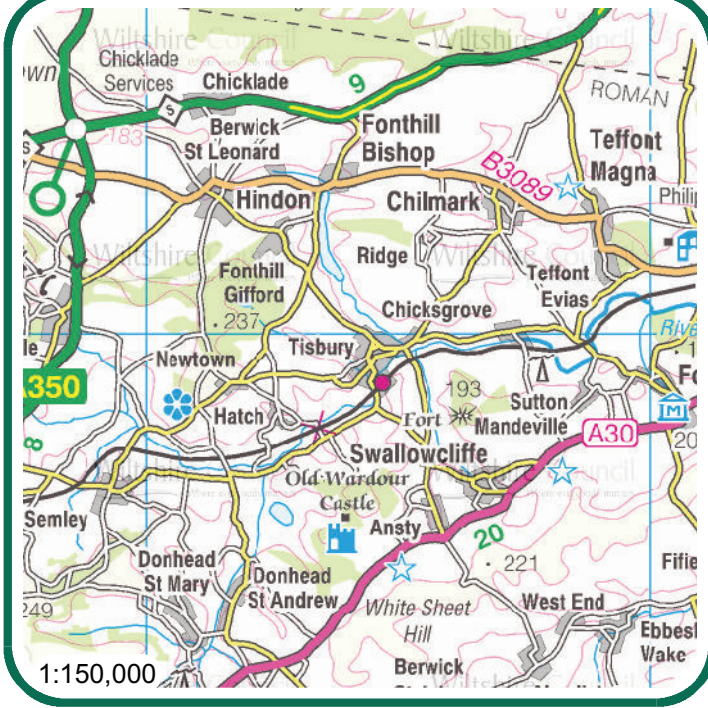
7.00pm

Wilton Community Centre

Wednesday 6 February 2013

7.00pm

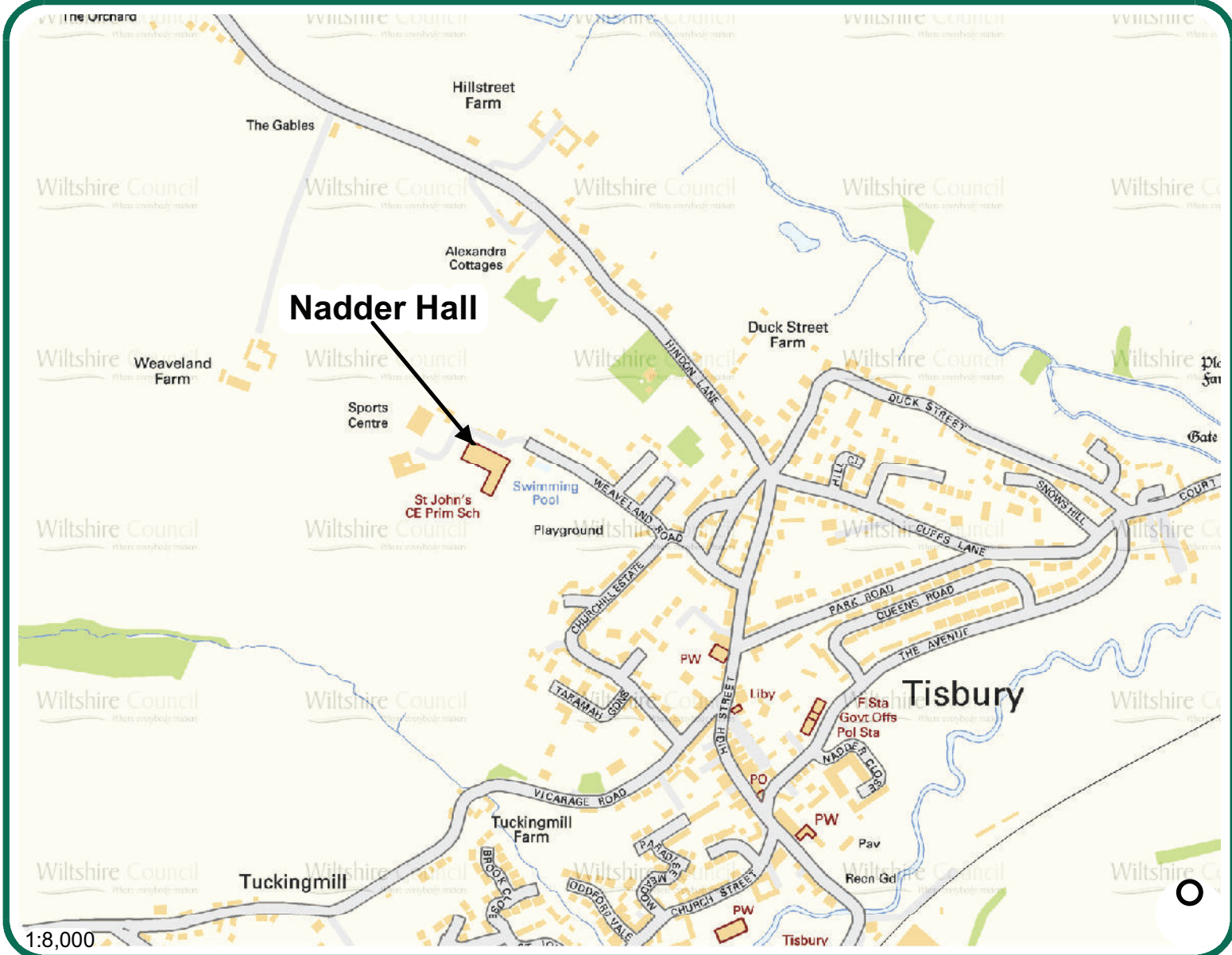
Grove Buildings, Mere



Nadder Hall
Weaveland Road
Tisbury
Wiltshire
SP3 6HJ



 Where everybody matters



MINUTES

Meeting: SOUTH WEST WILTSHIRE AREA BOARD
Place: East Knoyle Village Hall, Church Road, East Knoyle, SP3 6AE
Date: 24 August 2011
Start Time: 7.00 pm
Finish Time: 9.45 pm

Please direct any enquiries on these minutes to:

Lisa Moore (Democratic Services Officer), Tel: 01722 434560

or (e-mail) lisa.moore@wiltshire.gov.uk

Papers available on the Council's website at www.wiltshire.gov.uk

In Attendance:

Wiltshire Councillors

Cllr Bridget Wayman (Chairman), Cllr Jose Green (Vice Chairman), Cllr Tony Deane, Cllr George Jeans and Cllr Dick Tonge – Cabinet Member for Highways and Transport

Wiltshire Council Officers

Richard Munro, Community Area Manager
Lisa Moore, Democratic Services Officer
Graham Hogg, Service Director for Housing
Tracy Carter, Service Director - Waste Management
Jaki Farrell – Youth Coordinator

Town and Parish Councillors

Ansty Parish Council - Oldfield
Bishopstone Parish Council – J Thompson
Dinton Parish Council – C Smith
Donhead St. Andrew Parish Council – S Harry
Donhead St. Mary Parish Council – J Barnes & J Pendrill
East Knoyle Parish Council – D Booth & N Southerden
Fovant Parish Council – T Phillips
Hindon Parish Council – D Robertson
Sutton Mandeville Parish Council – W Brooks
Swallowcliffe Parish Council – G Ewer
Tisbury Parish Council – S Harry

Wilton Town Council – P Matthews

Partners

Wiltshire Police – Sergeant Dean Garvin

Wiltshire Fire and Rescue Service – Mike Franklin

TAPCAP – Nigel Knowles

Wilton CAP – Rachel Ashton Brown, Peter Edge & David Parker

Good Neighbour Scheme – Claire Routh & Helen Lines

CATPIG – Zita Hooper & Sophie Taylor

Tenants Panel – Suzanne George & Anne Knight

Total in attendance: 46

<u>Agenda Item No.</u>	<u>Summary of Issues Discussed and Decision</u>
1.	<p><u>Welcome and Introductions</u></p> <p>The Chairman welcomed everyone to the meeting of the South West Wiltshire Area Board and thanked the East Knoyle Village Hall committee for providing the refreshments.</p> <p>Councillor Dick Tonge, Cabinet member for Highways and Transport was introduced.</p>
2.	<p><u>Apologies for Absence</u></p> <p>Apologies for absence were received from:</p> <ul style="list-style-type: none"> • Councillor Richard Beattie – Board member • Nigel Lefroy – Burcombe Parish Council • Jill Randall – West Knoyle Parish Council
3.	<p><u>Declarations of Interest</u></p> <p>Councillor Jeans declared a prejudicial interest in item 13 – Community Area Grants – application from Mere Snooker Club, as his son was the electrical contractor for the project. He left the room when this item was discussed and did not vote.</p> <p>Councillors Green and Jeans declared an interest regarding item 13 – Community Area Grants – application for the Wilton Eco Park, as both Councillors also sit on the Southern Wiltshire Planning Committee as it was likely that a planning application from the applicant would later be brought to that committee. As this was not a prejudicial interest, the Councillors decided to take part in the discussion on this application but abstained from voting.</p>
4.	<p><u>Minutes</u></p> <p>The minutes of the previous meeting were agreed a correct record and signed by the Chairman, with the following amendments:</p> <ol style="list-style-type: none"> 1. To delete C Churchill from the list of attendees for East Knoyle, as this was incorrect 2. Wilton Town Councillor Phil Matthews had contacted the Democratic Services Officer before the meeting to make an amendment to the minutes under Chairman’s Announcements, when he had raised the issue of the Land Command Site at Wilton. This should have read that

	<p>since the Localism meeting, the Highways Agency had objected to the scheme.</p>
<p>5.</p>	<p><u>Matters Arising</u></p> <p>The Chairman invited Councillor Tonge to give an update on the following matters arising:</p> <p>Administration of the Community Speed Watch (CSW) scheme. A meeting between the Council and CSW officers had been scheduled for the following week to discuss ways of processing the distribution of letters to those caught speeding more efficiently. If this could not be achieved then the recruitment of an additional administrator would be considered.</p> <p>The Core Strategy Consultation. The Council must consult legally on all matters of some substance. The content of each consultation does vary depending on the nature of the topic, resulting in some people finding the larger consultation exercises more complex than others. Officers are always at hand to assist people in the completion of a consultation and although online completion is encouraged, paper copies are also available.</p> <p>Other matters arising were:</p> <p>Queen Elizabeth II Playing Fields Challenge The community areas are still under re-assessment by the Leisure & Play Strategy Officer, an update will be brought to a future Area Board meeting when available.</p> <p>Covered up Speed Cameras Following the withdrawal of the Police from the Camera Safety Unit, speed cameras had been switched off. The camera in South Newton which had been covered up had now been uncovered, however it was noted that the camera in South Newton was the responsibility of the Highways Authority.</p> <p>Community Area Grants funding An internal audit had been carried out on the grants awarded to applicants under the Community Area Grant Scheme, to establish whether the funds had been use as per intended and detailed on the application forms. A report on the findings would be sent to the Chairman of each Area Board shortly.</p>
<p>6.</p>	<p><u>Chairman's Announcements</u></p> <p>Community Area Manager Richard Munro, Community Area Manager would be moving on to an internal promotion on 10th October 2011. The Chairman thanked Richard for all of his work for the Board over the past two years.</p>

Youth Service

The Youth Service had a display at the back of the hall which included digital photos of recent projects, such as the course attended by young people on how to build a straw bale building.

Waste and Recycling

Tracy Carter, Service Director for Waste and Recycling had a display at the back of the hall detailing the changes to the waste and recycling service for the South West, in particular the implementation of an opt in free garden waste collection service. Anyone interested in registering for the service should do so by 30th September 2011. This could be done online, or by completing and returning a leaflet which was available at the meeting to take away.

There would be a series of road shows later in the year to provide further information on the services available.

Questions and comments were then taken from the floor:

- Will the leaflets be distributed to parish and town councils. **Answer:** Leaflets called 'Coming Soon' were sent out to every home, however more leaflets can be made available if requested.
- The question on the leaflet which asks if you already have a wheeled bin, is not clear whether it is asking if you already have a green waste wheeled bin or other wheeled bins. **Answer:** The question is to establish if you are a household who can accommodate a wheeled bin or not. Some households do not have space for any wheeled bins, so they are offered alternative recycle bags, houses that already have wheeled bins for household waste and the blue lid bins would be offered the green lid wheeled bin.
- What is the recommended time to put your bin out for collection and if a bin is put out at a different time, too far in advance, and does this result in a fine. **Answer:** We ask that bins are placed out at 7.00am on the day of collection and brought back in as soon as is possible after the collection has been made. However if people put their bins out on the night before a collection there would not usually be a problem with that, and there would be no fine for doing so.
- Will a compost facility be available in the future. **Answer:** We do have a food compost scheme available where subsidized compost bins can be purchased by Wiltshire residents, leaflets on this and information on the website are available.
- Is a reduction in council tax available to the rural households that are capable of composting food and garden waste on their own land, and therefore would not require the green waste service. **Answer:** At the moment data is not collected on a Community Area basis and the waste and recycling services provided by the Council are available to everyone in Wiltshire.

The Chairman thanked Tracy for attending.

7.

Older People's Accommodation Strategy

The Board received a presentation from Karen Jones, Senior Project Manager – Business Change, outlining the strategy for the Help to Live at Home scheme.

The Council has produced a 10 year development strategy, modelled across two timeline options, which will modernise the way that older people's accommodation is provided, develop and adopt an integrated accommodation system, ensure the best use of increasingly scarce resources and respond to local needs in local communities.

The number of older people within south west Wiltshire is set to increase by 36% by 2026. The number of people with dementia in this area is also set to increase by 53% by 2025.

The capital cost of the proposed development programme, including extra care, nursing and specialist dementia care provision, is approximately £220m based on current prices. Under these proposals the Council does not anticipate funding developments directly and will be working to maximise investment from the private and voluntary sectors. An innovative joint procurement exercise with Devon County Council is also being progressed in an attempt to reduce future Social Housing Grant requirements for extra care developments by accessing potential cross-subsidisation of schemes through the inclusion of Council owned land.

The proposed development strategy and service remodelling would enable the Council to realise a cost avoidance of approximately £600m over the next 25 years when compared to the "do nothing" option. This will assist the Council to offset the challenges of the forecast demographic change of older people and is achieved through a diversion of people from residential care to community support or specialist nursing or dementia care, which achieves an average saving per person of £44 per week.

Proposed Developments in South West Wiltshire are:

- A 45 unit extra care scheme to meet nursing needs in Mere – A site for this development is still to be determined.
- A Community extra care scheme in Tisbury.
- Timescale – Tisbury should be operational within the next 2 years and Mere between 2016 and 2018.

The development strategy will be delivered through a variety of partnerships, contractual arrangements and funding opportunities. These include:

- A long-term partnering agreement with The Orders of St John Care Trust, who currently operate the Council's care homes for older people, which recognises the need for developments and / or significant refurbishments due to the ageing nature of the existing facilities.
- The Department of Health Private Finance Initiative through which the

	<p>Council has been provisionally allocated £49.687m to deliver specialist dementia care and nursing facilities in the south and north of the county.</p> <ul style="list-style-type: none"> • An innovative Preferred Developer Partner Framework agreement which is being jointly procured with Devon County Council to facilitate the development of extra care housing with little or no requirement for public subsidy i.e. Social Housing Grant, due to the potential cross subsidisation of facilities through the inclusion of Council owned land. • A review of the sheltered housing stock to assess the quality of accommodation and its ability to meet current and future needs. Facilities may be recommended for refurbishment to provide community extra care housing or to meet other Council priorities i.e. the provision of affordable general needs accommodation. • Utilising private sector and Registered Social Landlord (RSL) initiatives which may reduce the requirement for Council led developments in particular community areas. <p>Questions and Comments were then taken, these included:</p> <ul style="list-style-type: none"> • These plans are assuming that there will be no further financial cuts. <u>Answer:</u> There is no other alternative than to look after people, the new strategy is a more effective way of providing the services that are needed. • Can you explain how the two different factors that you are using marry up. <u>Answer:</u> The 36% is the increase in population in the South West community area, the other figure is the number of units to be delivered. • Wilton is not mentioned in the presentation, is anything planned for that area? <u>Answer:</u> There are a number of sites in Salisbury and Old Sarum which would meet the needs for the Wilton area. • Are there plans for who will run/operate these homes? <u>Answer:</u> The Council has not operated any owned home since its care home stock was transferred over in 2007. Care in the homes is contracted and monitored. • How do you go about finding a property for Mere? <u>Answer:</u> The Property Officers have been asked to assess if there is any suitable Council owned land, if that fails we would approach partners, if that did not establish a suitable site then we would advertise in the local community. • How is the strategy based, is it by the need in the area? <u>Answer:</u> Yes the Strategy is based on need, Mere is very low compared to the rest of Wiltshire for its elderly population. • There are some parishes like the Donheads which are very close to Shaftesbury, are there cross boarder arrangements? <u>Answer:</u> We are able to purchase cross boundary beds if required.
8.	<p><u>Help to Live at Home</u></p> <p>The Board received a presentation from Nicola Gregson, Head of Commissioning: Care, Support and Accommodation.</p> <p>The Council has been working with the NHS and residents of Wiltshire on a major review of the services that are available to older and vulnerable people</p>

living in the county. This is called 'Help to live at Home'. The review aims to improve the experiences of vulnerable adults and carers who require support, whilst ensuring that the changes are sustainable in the future. Some of the points covered were:

- Bringing together a variety of separate services into one so that a single service is able to meet a wider range of needs. The sort of services included are personal care in the home, housing support and other services that support people in their homes.
- Ensuring these services focus on helping people learn or re-learn skills they may have lost as a result of illness, or another event that has resulted in them losing confidence and needing some help.
- Making even better use of the wide range of community services that there are in Wiltshire.
- Making sure these services are focused on doing what people want and helping people to live independent and fulfilling lives.
- Supporting sheltered accommodation schemes.

As a result of this review –

- Services to older and vulnerable people in Wiltshire will be improved with more people able to access help to help themselves through the provision of information, advice and support from within the wider community and less people dependent upon help from the Council.
- More people will be able to remain in their own homes with an improved quality of life.
- Less people will require help for long periods of time – more people will be helped to become independent more quickly.
- People who need support will receive it at whatever time of the day or night.
- People will receive the right help, at the right time, in the right place.
- There will be two service providers for the South West Wiltshire, these are Ridgeway and Somerset Care.

Questions and comments were then taken from the room, these included:

- The community care assessment paperwork is too complex for some older people to complete on their own. **Answer:** There is a requirement to carry out an assessment before a service can be provided, the role of the care assessor team is to go out and visit people in their homes to assist them with things like completing the paperwork.

Is there a cost for the Telecare system. **Answer:** For people who are eligible to receive care from Wiltshire Council, the Telecare system is part of their care package, but for others who can afford their own care, they are able to buy into the scheme.

There are already several schemes in operation which are similar to the

	<p>Telecare scheme, how does this differ from those. Answer: There are currently 12 organisations providing Telecare to people across Wiltshire, what we aim to market with the Telecare scheme is that we can offer and make available a service that when triggered by a customer, the call centre will make a decision based on the information that is available to them, on whether to call upon a number of options, such as to request that a doctor, nurse, local named friend/carer, or social worker attend the scene to assist the customer.</p> <p>Is it the intention to develop more call centres across Wiltshire. Answer: There will be a joint health and social care centre in Wiltshire.</p> <p>In Petridge Lane in Mere some residents have set up a scheme where they each look after a couple of elderly neighbours who could have accidents and fall over. The Telecare scheme sounds good however the people called upon to attend the elderly person in their home would not know them like the neighbours do; there is a possibility that that level of connection could be lost. Answer: It is our aim that the organisation will be able to obtain enough information about each individual, this would include what it important to them and who they wished to be contacted during an incident, for example if their neighbour helps them, we can then import that information into their care plan.</p> <p>A lady who ran a care service for older people in Mere asked how the active collaboration through groups and volunteers could be taken forward through the strategy. Answer: Part of the Strategy is to be fully aware of what services are available in each area and to incorporate these services into the overall package. Nicola agreed to facilitate a meeting between the care service provided by the lady and the Council to move forward.</p>
9.	<p><u>Wiltshire Good Neighbour Scheme</u></p> <p>Helen Lines, Health and Well-being Project Manager, Community First, gave a presentation to the Board on the scheme.</p> <p>The Good Neighbour Scheme (GNS) had been designed to work alongside the Help to Live at Home Scheme, in providing information and to signpost the elderly to services which they may require.</p> <p>Good Neighbour Coordinators are employed by Community First to work 10 hours a week within their community, their role is to promote existing services and to identify new users of these services. The Coordinators visit local community groups such as luncheon clubs and the Women’s Institutes.</p> <p>The Good Neighbour Coordinator for Wilton is Claire Routh who has been in post for 6 months. A further 4/5 new Coordinators are due to start in the South West area of Wiltshire in mid September 2011.</p> <p>Questions and Comments included:</p>

	<ul style="list-style-type: none"> • This scheme does not appear to have had enough publicity as until now, many people had not heard about it. Do you plan to visit town and parish councils and link schemes to publicise it further. Answer: Contacting local organisations and town and parish councils is one of the first tasks for a GNS Coordinator, to spread the word and to make new contacts. • Why is the scheme called ‘Good Neighbour’ when the coordinator is not a neighbour. This name could be misleading and confusing to some elderly people and in some areas there are already people who are neighbours helping the elderly residents in their street. Answer: 90% of the coordinators recruited are local people from the area, they are usually known to the local community. • Logistically, having 22 people working 10 hours each a week does not seem like enough to cover the whole of Wiltshire. Answer: We are not covering Towns at present we are only focusing on covering 65% of Wiltshire. • The Board has heard three interesting presentations about providing a strategy level of care from Wiltshire Council. Parish councils are highly active in the South West Wiltshire community areas; it appears that this strategy has a top down approach onto the community without involving the parish councils. Answer: Parish and town councils have been involved every step of the way. There was a launch event in July which every parish and town council would have been invited to. The service was designed with the needs of the community in mind. • How were the areas in which the scheme is to be rolled out chosen. Answer: The Council had undertaken an exercise to assess which areas had the greatest need. <p>The Chairman asked that Helen provide a list of all of the coordinators in the South West and when they are due to start in post.</p> <p>Action: Helen Lines, Community First.</p>
10.	<p><u>Community Areas Transport Group (CATG)</u></p> <p>The Board received an update from the Councillor Tony Deane from the last meeting of the Community Area Transport Group (CATG) meeting which had been held on 19 July 2011. Two points highlighted were:</p> <ol style="list-style-type: none"> 1. Fingerposts <p>Costings had been received from a Council contractor to replace fingerposts. The Area Board had previously decided that it would allocate some funds to each parish to have one fingerpost sign replaced per year. Please contact the Community Area Manager for more information.</p> <ol style="list-style-type: none"> 2. Speed Indicator Devices (SIDs)

The Board had received approval of Cabinet member Cllr Dick Tonge that if the Board was to purchase its own SID it could be incorporated in to the deployment programme for the three community areas within the South West.

Councillor Deane added that the CATG had been fortunate with the officers servicing the group as the projects chosen would all be moving forward. If parishes had ideas for small road traffic schemes then they were urged to raise an issue on the online system.

A resident of Sutton Manderville explained that in Sutton Road there was a traffic problem where there was a narrow passing place near the Compasses; there was little or no room for manoeuvre which had resulted in a serious accident on Monday evening. Residents have had great difficulty coming out of their driveways due to the speed of the traffic and it was felt that something needed to be done to alert drivers to horses and children in the vicinity. After trying various avenues for assistance to find a way to improve the situation, an issued had been logged, the situation would be looked into.

The Chairman confirmed that this issue was now on the list which would be looked at by the CATG and Councillor Deane added that Highways officers would be asked to look at the site.

Digger Booth, East Knoyle Parish Councillor commented that there was a problem with HGV vehicles using satellite navigation systems (SatNav) which brough them off the A350 down through Bilton around two extremely sharp bends, then back on to the A350. A traffic survey was underway to provide evidence of this. The parish had spoken to SatNav companies to ask that they make changes to the data, but the problem still exists.

Councillor Tonge informed the Board that there were two main forms of SatNav's the TomTom type for cars and another for HGV's. Until Central Government say that HGV's must have the type specifically designed for them, they will use the car version which includes the smaller routes. He advised Digger to lobby the local MP as this was a national problem.

Councillor Deane added that the Board would be open to receiving applications for grants to fund multi language signs, warning HGV drivers not to use certain roads. He agreed to speak to the area Highway Engineer - David Button, to discuss the options, but also urged Digger to write to the local MP to explain the problem.

Action: Cllr Tony Deane

Tony Phillips, who had attended the last CATG meeting added that it had been an excellent meeting where people had the opportunity to speak to 3 Transport Officers.

	<p>The C and unclassified Road Review would start in April 2012. Officers would first look at the roads to see where accidents had occurred, they would then produce a list of recommendations which would be sent to parish and town councils for comments.</p>
11.	<p><u>Tisbury Campus Update</u></p> <p>Councillor Tony Deane gave an update from the Shadow Campus Operations Board (SCOB) on planning for a Tisbury Campus. The SCOB had sent out a consultation survey to residents, 91.3% of those who replied to the paper, lived in the local area. 76.7% of those who responded were in favour of a Campus. Two proposals which were not included on the paper had been received, these were:</p> <ul style="list-style-type: none"> • There should be a facility for parish councils at the campus • The young people would like a space allocated to them at the campus site to build a straw bale youth service building. <p>It was suggested that parish councils in the Tisbury area should be sent a copy of the notes from the SCOB meeting, directly by email. The Community Area Manager agreed to look into this.</p> <p>Action: Richard Munro, CAM.</p> <p>The next SCOB meeting would be held on Tuesday 6 September 2011.</p>
12.	<p><u>Updates from Partners</u></p> <p>The Board received the following verbal updates from Partners:</p> <p><u>CAYPIG – Jaki Farrell, Youth Coordinator</u></p> <p>During the summer, at short notice the group received funding to run a pilot scheme from the National Citizen Service, where year 11 and 12 pupils took part in a couple of residential courses followed up by social action projects. Other activities and Leisure credits work have run alongside this. Social Action (by the NCS Team) and Leisure Credits work by the young people in the community since the last meeting has included:</p> <ul style="list-style-type: none"> • Footpath restoration and replacing styles, kissing gates etc along the Wessex Ridgeway between Newtown and Wardour and support to the Bridging Project with a conservation day on Long Hill in Mere (This has been the start of the NCS team Social Action Project) • Digging the ground to make a community Garden at Pooh's corner in Bowerchalke, • Clearance along footpaths in Tisbury & Long Hill, Mere

	<ul style="list-style-type: none"> • Re-chalking the Shiny Seven Badge at Sutton Mandeville • Restoration work to benches in Fovant, East Knoyle and Tisbury. <p>Funding had been received from 'Sowing Seeds' to recruit a Leisure Credit Coordinator (Mark Holden), he was now in post and would be able to develop the scheme across the three community areas.</p> <p>As well as a variety of trips and activities being 'bought' with Leisure Credits, some were now also being traded for driving lessons and recent requests for the chance to trade them for a CBT was being looked into.</p> <p>The Wilton Youth Centre was now open; however the official opening would be in the Autumn.</p> <p>Mr Phillips said well done to the youth who worked on the Shiny Sevens as some had said that the work was not possible.</p> <p>Police – Sergeant Dean Garvin</p> <p>Updates for the Tisbury and Mere areas were attached to the agenda, a hard copy of the Wilton update was circulated at the meeting. In addition Sergeant Garvin added that in Wilton the police team would be focusing on the problems around the market square. A problem facing the rural sectors was burglaries to outside dwellings, such as sheds.</p> <p>Councillor George Jeans thanked the police in Mere for their work to tackle the low level ASBO problem which had arisen. This problem had now been dealt with.</p> <p>NHS – Phil Matthews</p> <p>In addition to the update attached to the agenda, Mr Matthews added that there would be an Emergency meeting held on 12th September 2011 where PCT's would discuss plans from central government to hold another consultation.</p>
13.	<p><u>Community Area Grants</u></p> <p>The Board considered six applications for funding from the Community Area Grant Scheme. The Chairman invited applicants present to speak in support of their application and to answer any questions from the room. After discussion the Board members voted on each application in turn.</p> <p><u>Decision</u></p> <p>West Knoyle Parish Council was awarded £5,000 towards their project to make repairs to the Village Hall.</p> <p><i>Reason</i></p> <p><i>The application met the Community Area Grant Criteria for 2011/12 and Would provide improvements allowing ongoing use to a much used facility in the community.</i></p>

	<p><u>Decision</u> Mere Snooker Club was awarded £336 towards their project to install emergency lighting to comply with mandatory standards. <i>Reason</i> <i>The application met the Community Area Grant Criteria for 2011/12 and Would provide improvements allowing ongoing use to a much used facility in the community.</i></p> <p><u>Decision</u> The application from Kingfisher Montessori School was refused. <i>Reason</i> <i>The Board required further information on the application, as no one was present to speak on behalf of the application the members concluded that the school could modify their fees to pay for the required safety features.</i></p> <p><u>Decision</u> Following a discussion, the application from Wilton Eco Park was withdrawn so that it could be resubmitted at a later date with further information, not available at the time. <i>Reason</i> <i>Further information was required on the details of the consultation.</i></p> <p><u>Decision</u> The application from Semley Stores was deferred. <i>Reason</i> <i>The Board required further information on the application, as no one was present to speak on behalf of the application the members concluded that the application be deferred until the next meeting when the applicant could attend.</i></p> <p><u>Decision</u> Donhead St Andrew Parish Council was awarded £370 towards their project to produce a survey of the cemetery to establish available grave space, with the condition that the award be returned in full next year from the village precept. <i>Reason</i> <i>The application met the Community Area Grant Criteria for 2011/12 , however the Board felt that this project should be paid for by the parish precept, so agreed to award the money until the precept could be raised next year to cover the cost.</i></p> <p>Action: Richard Munro, CAM</p>
14.	<p><u>Update from Community Area Partnership</u></p> <p><u>WilCAP (Wilton Community Area Partnership)</u> Peter Edge explained that WilCAP was still going strong, the next AGM would</p>

	<p>be on 26th September 2011 at Wilton Town Council at 7.30pm.</p> <p>Richard Munro agreed to include the details of this meeting on the website.</p> <p>Action: Richard Munro CAM</p> <p><u>TAPCAP (Tisbury Community Area Partnership)</u> Nigel Knowles explained that TAPCAP was working alongside the SCOB to assist with the Campus project.</p>
15.	<p><u>B3089 HGV Survey</u></p> <p>Dinton Parish Councillor Charles Smith would provide a report detailing the findings of the survey at the next Area Board meeting in October.</p>
16.	<p><u>Update on Issues</u></p> <p>Richard Munro, Community Area Manager gave an update. There were five issues currently in progress, he urged people to look at the web site for full details and to register any new issues.</p>
17.	<p><u>Future Meeting Dates, Evaluation and Close:</u></p> <p>The Chairman thanked everyone for coming and closed the meeting.</p> <p>The next meeting of the South west Wiltshire Area Board will be held on Wednesday 5 October 2011 at Nadder Hall, Tisbury.</p>

This page is intentionally left blank

South West Wiltshire Area Board – 5 October 2011

Chairman's Announcements

Wiltshire's new 'Warm and Well' free home insulation scheme

There are an estimated 30,000 people in fuel poverty in Wiltshire, who cannot afford to heat their homes adequately. How many live in your community area?

Cold homes impact on the health and wellbeing of your local residents. Would you like to help yourself and other residents save money and improve your home comfort?

The new Wiltshire Warm and Well scheme is open to all home owners and private tenants, and enables residents to improve the energy efficiency of their homes through installing loft and cavity wall insulation – saving money on bills and making homes warmer.

To access the scheme

Freephone: 0800 512 012, or go to <http://www.warmandwell.co.uk>

With Council funding as well as national CERT funding, Wiltshire Warm and Well aims to improve 3,000 homes in financial year 2011/2012.

Wiltshire Council's Core Strategy commits the council to reducing carbon emissions throughout the county. Carbon emissions from domestic properties make up 24% of total emissions. Improving insulation of domestic properties therefore makes a significant contribution to energy saving and therefore carbon emissions reduction.

We urge Area Board partners to get involved and help refer people to the scheme.

If you would like to hold a special event to promote the scheme, or promote it as part of another event you are holding, the 'Green Room' van is available to help, (further details at <http://www.warmandwell.co.uk> > The Green Room). Leaflets can also be supplied should you be interested, simply email your request to:

warm&well@swea.co.uk

Further information on this scheme can be accessed on the Wiltshire World Changers Network website, <http://wiltshireworldchangers.org> or via the Wiltshire Council website, <http://www.wiltshire.gov.uk/counciltaxhousingandbenefits/housing/housinggrants/homeenergygrants.htm>

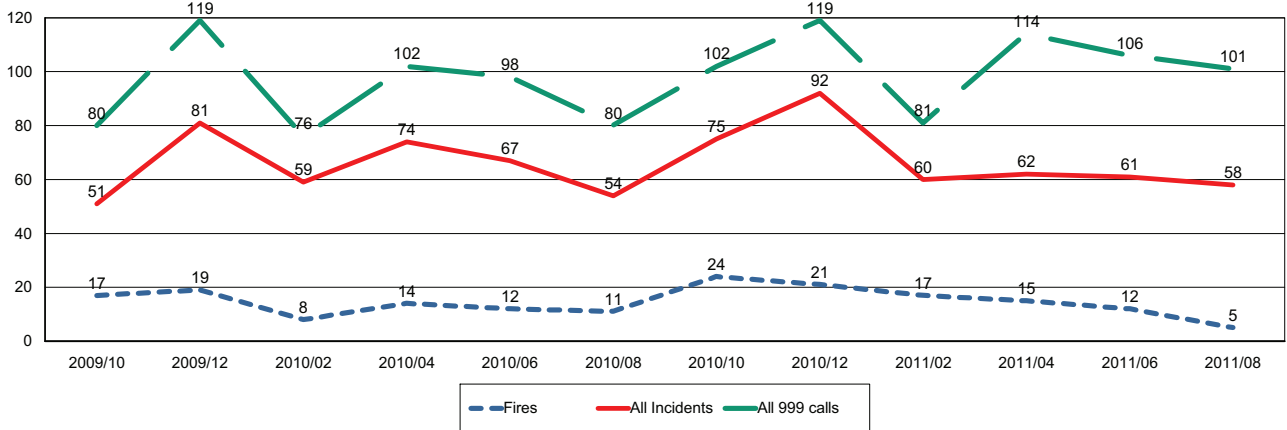
Rachel Ross
Home Energy Efficiency Officer
Energy Change and Opportunity
Economy and Enterprise
Wiltshire Council
P O Box 2281
Salisbury
SP2 2HX



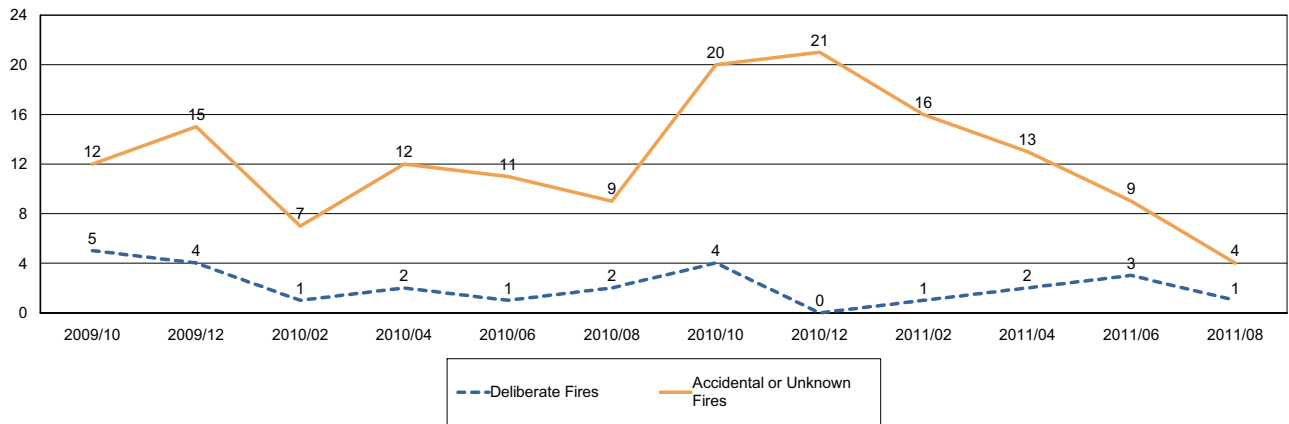
Report for South West Wiltshire Area Board

The following is a bi-monthly update of Fire and Rescue Service activity up to and including August 2011. It has been prepared by the Group Manager for the Board's area.

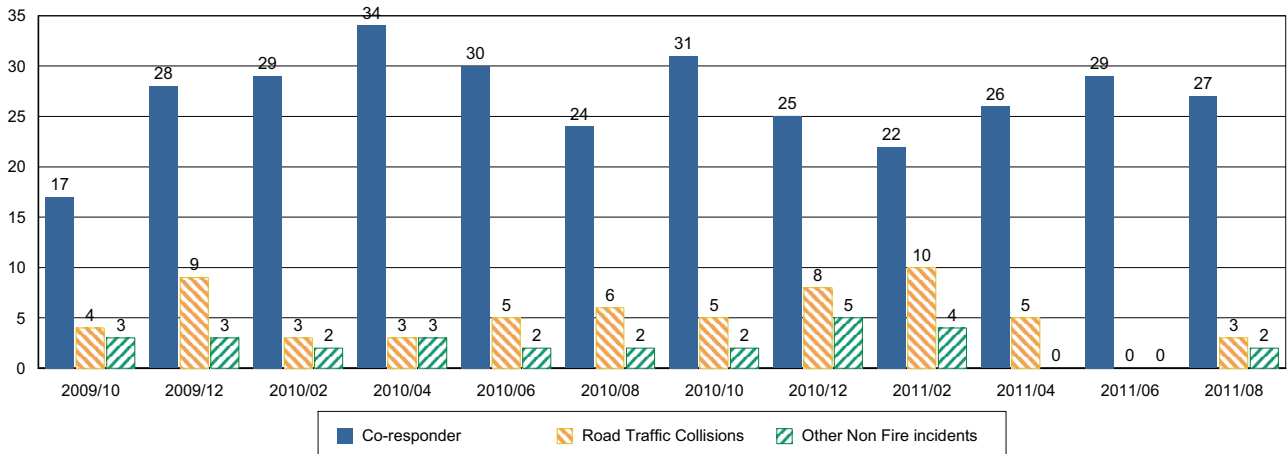
Incidents and Calls



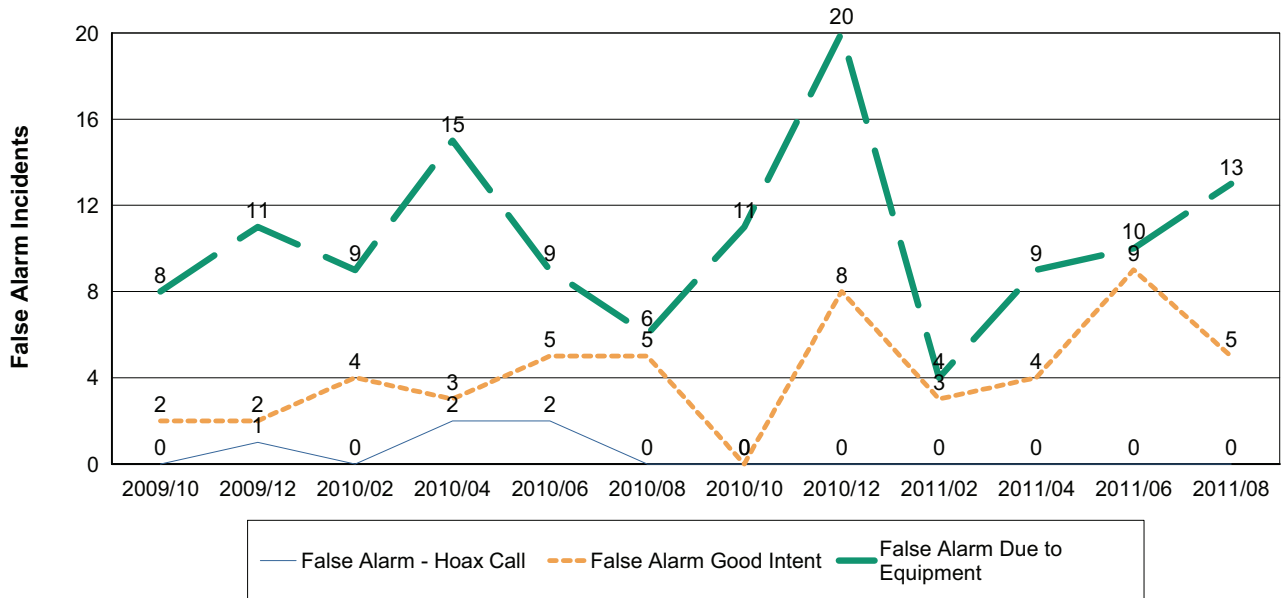
Fires by Cause



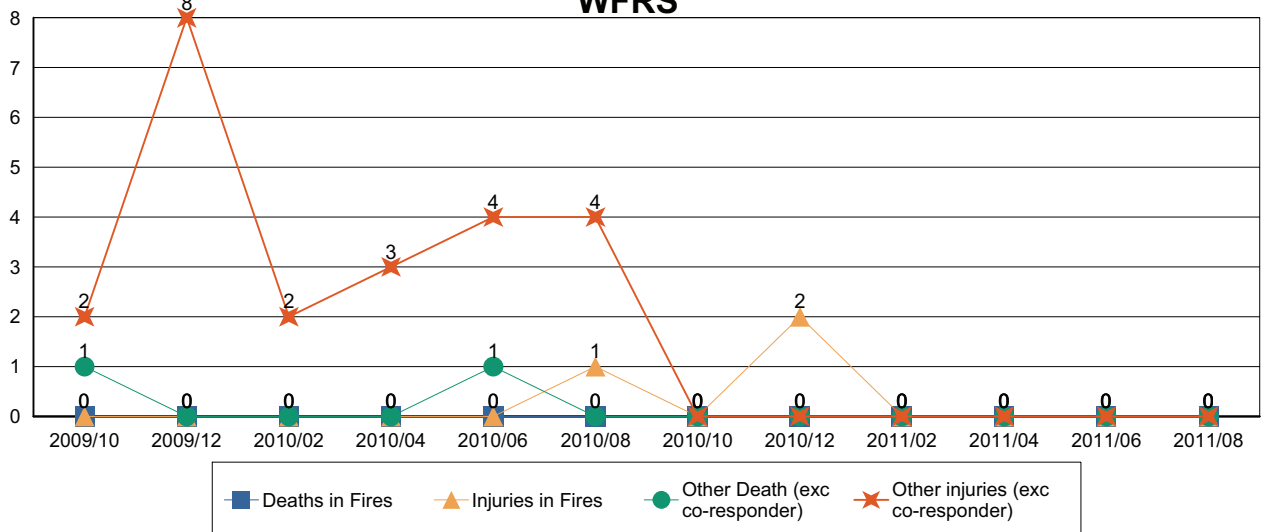
Non-Fire incidents attended by WFRS



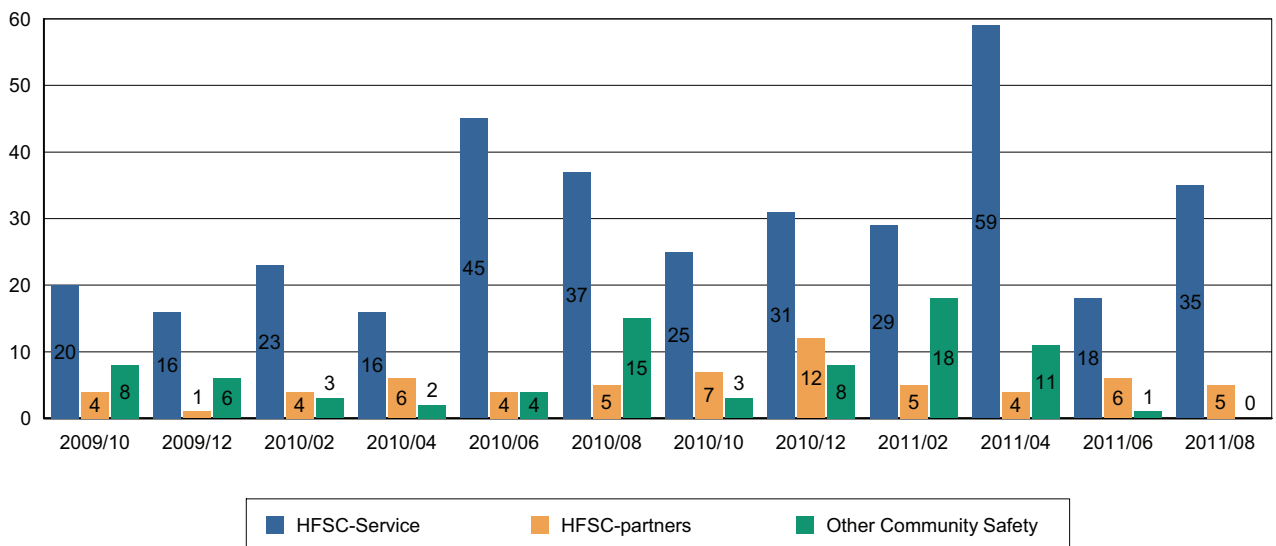
Number of False Alarm Incidents



Death & Injuries in incidents attended by WFRS



Home Fire Safety Checks and other domestic safety



Comments and Interventions overleaf

NHS Update – September 2011

Exercise after stroke service in Wiltshire

NHS Wiltshire and Wiltshire Council are working together to provide exercise classes for stroke survivors at leisure centres across the county. Exercise professionals have received stroke training so they can help people to recover more quickly through specially-tailored exercises classes. The first exercise after-stroke classes and gym-based sessions will be offered from September at Castle Place Leisure Centre in Trowbridge. Further classes will be offered in Chippenham, Salisbury, Devizes and Marlborough from January 2012.

Exercise is particularly important for people who are recovering from a stroke, as a stroke often results in reduced strength, mobility, fitness and mood as well as loneliness and a myriad of additional challenges such as pain, impaired movement or comprehension, which may make it difficult for people with stroke to get to exercise facilities. The exercise after stroke service forms part of a range of improvements to stroke services in Wiltshire to help people rebuild their lives.

Stroke Clubs are currently held across Wiltshire in Amesbury, Chippenham, Salisbury, Swindon, Trowbridge, Warminster and Wroughton. Stroke community support workers are also available to provide advice and support to people who have had a stroke and their carers. A major review by the Care Quality Commission (CQC) on stroke care has placed NHS Wiltshire in the category of **best performing** Primary Care Trusts, ranking the trust 20 out of 151 PCTs for the stroke services it delivers. Further details can be found on the NHS Wiltshire website at: <http://www.wiltshire.nhs.uk/Public/Your-health-wellbeing/FAST-stroke-action.htm>

Stop Smoking Successfully

Nearly 5,000 people used the NHS Wiltshire Stop Smoking Service last year. Our aim is to make Wiltshire a healthier place to live and there are many more people we can help to quit. The Wiltshire NHS Stop Smoking Service supports people in a variety of methods and treatments, providing specialist support for groups of people such as women who are pregnant, people with mental health problems and young people. The team of advisors work across different services in all sorts of venues including GP surgeries and health centres, clinics, pharmacies, Children's Centres and hospitals. NHS Stop Smoking Services encourage anyone who is trying to stop their habit to contact us on 01380 733891 or via our website NHSstopsmoking@wiltshire.nhs.uk.

Next NHS Wiltshire Board Meeting

The next Board meeting of NHS Wiltshire will be held on **21 September 2011 at 10am - Southgate House**. Members of the public are welcome to attend. Papers are published a week before the meeting on www.wiltshire.nhs.uk or on request from Stacey Saunders, NHS Wiltshire (tel: 01380 733839, email: stacey.saunders@wiltshire.nhs.uk). For further information or copies of documents referred to above, please email communications@wiltshire.nhs.uk

Crime and Community Safety Briefing Paper
South West Wiltshire Community Area Board
Nadder Hall
5th October 2011



1. Neighbourhood Policing:

Team Leader:

Sgt Dean Garvin

Wilton Town Team:

Pc Rachel Schwender
PCSO Ben Brewster

Wilton Rural Team:

PC Peter Jung
PCSO Sam Spacey

2. NPTs - Current Priorities & Consultation Opportunities:

Wilton Town:

1. Anti-Social Behaviour – Randalls Croft Road
2. Youth engagement – Wilton Town

Wilton Rural:

1. Theft and Burglaries – Across Patch

Visit the new and improved website at: www.wiltshire.police.uk

3. Police Authority Representative: Mr Paul Sample

Please contact via Wiltshire Police Authority Tel. 01380 734022 or
<http://www.wiltshire-pa.gov.uk/feedback.asp>

4. Performance and Other Local Issues

Overall the crime figures remain for the Wilton Patch remain low. The Wilton Rural team is currently monitoring the number of non-dwelling burglaries taken place in remote location, Pc Jung is currently preparing an operation to deploy extra staff during the hours of darkness in an effort to combat these offences.

Wilton town will continue their work on youth engagement and are currently preparing for a second 'junior bluz and zuz' event, the last disco proving to be very popular. In addition to this the Pc Schwender and her team will look to keep on top of a couple of disorder that have been taken place in the Randalls Croft area and are working with the local authorities housing officer to ensure people are suitably located.

CRIME & DETECTIONS (Sept 2010 – Aug 2011) compared to previous year)

Wilton	Crime				Detections	
	September 2009 - August 2010	September 2010 - August 2011	Volume Change	% Change	September 2009 - August 2010	September 2010 - August 2011
Violence Against the Person	57	46	-11	-19%	42%	41%
Dwelling Burglary	17	9	-8	-47%	24%	33%
Criminal Damage	68	57	-11	-16%	6%	7%
Non Dwelling Burglary	36	65	29	81%	6%	2%
Theft from Motor Vehicle	24	33	9	38%	4%	0%
Theft of Motor Vehicle	9	7	-2	-22%	33%	0%
Total Crime	311	353	42	14%	18%	19%
Total ASB	284	255	-29	-10%		

Wiltshire Police are compared against a group of 8 most similar forces. Wiltshire Police have performed better than peers in All Recorded Crime and Violent Crime for the most recently reported 3 month (May - Aug 2011) and 12 month period (Aug-Jul 2011)

*Total Crime comprises all Crime Groupings listed above and also includes Theft and Handling, Fraud and Forgery, Robbery and Sexual Offences

** Detections include both Sanction Detections and Local Resolution

Paul Franklin
Acting Inspector
Salisbury Sector & South Rural

Crime and Community Safety Briefing Paper
Mere
5th October 2011



1. Neighbourhood Policing

Team Sgt:

Debra Ashley

Team:

Beat Manager – PC Richard Salter
PCSO – Jake Noble

2. NPTs - Current Priorities & Consultation Opportunities:

Up-to-date details about Neighbourhood Policing Teams including team membership, current priorities and forthcoming community consultation events can be found on our Wiltshire Police Website.

□ Visit the new and improved website at: www.wiltshire.police.uk

3. Police Authority Representative: Joy Hillier

Please contact via Wiltshire Police Authority Tel. 01380 734022 or
<http://www.wiltshire-pa.gov.uk/feedback.asp>

4. Performance and Other Local Issues:

The performance figures for Mere and the surrounding villages this reporting period show a 5% decrease in total crime. This equates to 11 less victims of crimes compared to this time last year.

This is pleasing and reflects how well the local police and partners have been whilst working together to deal with the more specific local issues.

In Wiltshire the main priority is to reduce violent crime and there is a continued reduction across Mere and the surrounding villages, so far this year there have been 7 fewer victims of assaults.

Our work in relation to preventing and detecting burglaries to rural farm premises/sheds and out buildings remains a challenge. Items such as farming equipment, tools, quad bikes and anything composed of metal for scrap value is still a most sought after commodity.

Whilst I feel this report brings some local concerns it is important to reiterate Mere and its surrounds continues to be a safe place to live. Wiltshire is constantly compared against 8 Forces of similar size and demography and yet again this reporting period performs the best!

CRIME & DETECTIONS (Sept 10 to Aug 11 compared to previous year)

Mere	Crime				Detections	
	September 2009 - August 2010	September 2010 - August 2011	Volume Change	% Change	September 2009 - August 2010	September 2010 - August 2011
Violence Against the Person	30	23	-7	-23%	50%	61%
Dwelling Burglary	10	7	-3	-30%	30%	0%
Criminal Damage	29	38	9	31%	10%	3%
Non Dwelling Burglary	29	43	14	48%	0%	0%
Theft from Motor Vehicle	44	16	-28	-64%	0%	6%
Theft of Motor Vehicle	5	6	1	20%	0%	0%
Total Crime	202	191	-11	-5%	17%	12%
Total ASB	111	139	28	25%		
<p>Wiltshire Police are compared against a group of 8 most similar forces. Wiltshire Police have performed better than peers in All Recorded Crime and Violent Crime for the most recently reported 3 month (May - Aug 2011) and 12 month period (Aug-Jul 2011)</p> <p>*Total Crime comprises all Crime Groupings listed above and also includes Theft and Handling, Fraud and Forgery, Robbery and Sexual Offences ** Detections include both Sanction Detections and Local Resolution</p>						

Inspector Lindsey Winter
Area Inspector for Warminster Westbury Tisbury and Mere
25th August 2011

Crime and Community Safety Briefing Paper Tisbury

5th October 2011



1. Neighbourhood Policing

Team Sgt:

Ps Debra Ashley

Town Centre Team:

Beat Manager – PC Martyn Day
PCSO – Gary Chambers

2. NPTs - Current Priorities & Consultation Opportunities:

Up-to-date details about Neighbourhood Policing Teams including team membership, current priorities and forthcoming community consultation events can be found on our Wiltshire Police Website.

□ Visit the new and improved website at: www.wiltshire.police.uk

3. Police Authority Representative: Joy Hillier

Please contact via Wiltshire Police Authority Tel. 01380 734022 or
<http://www.wiltshire-pa.gov.uk/feedback.asp>

4. Performance and Other Local Issues

The crime figures below show some very mixed results this reporting period.

Whilst there is an 11% increase in crime compared to this time last year it must be remembered that Wiltshire are still the best performing of the 8 similar forces we are consistently compared against.

The good news is that violence against the person has decreased by 42% which means that 10 less victims have been assaulted than in the same period last year, and there is also a 24% reduction in the number of anti-social behaviour incidents for Mere and the surrounding villages.

This is a significant step towards making Wiltshire the safest County.

The burglaries reported to shed, outbuildings, farms and garages remain a challenge for us all, the figures below show there have been 26 more reports this year when compared to the previous 12 months.

This type of crime continues to be a priority area and we are working closely with Avon and Somerset & Dorset Police as we know the offenders often come from outside of Wiltshire.

There continues to be a co-ordinated approach with all 3 Forces running joint operations, Inspector WHITLEY from Dorset and Inspector NICHOLSON from A&S are suffering similar Crime types and we are united in working together to tackle this.

CRIME & DETECTIONS Sept 2010 – August 2011 (compared to previous year)

Tisbury	Crime				Detections	
	September 2009 - August 2010	September 2010 - August 2011	Volume Change	% Change	September 2009 - August 2010	September 2010 - August 2011
Violence Against the Person	24	14	-10	-42%	50%	36%
Dwelling Burglary	12	10	-2	-17%	0%	0%
Criminal Damage	33	35	2	6%	9%	9%
Non Dwelling Burglary	43	69	26	60%	0%	1%
Theft from Motor Vehicle	21	25	4	19%	0%	0%
Theft of Motor Vehicle	4	7	3	75%	50%	14%
Total Crime	204	226	22	11%	14%	11%
Total ASB	152	116	-36	-24%		
<p>Wiltshire Police are compared against a group of 8 most similar forces. Wiltshire Police have performed better than peers in All Recorded Crime and Violent Crime for the most recently reported 3 month (May - Aug 2011) and 12 month period (Aug-Jul 2011)</p> <p>*Total Crime comprises all Crime Groupings listed above and also includes Theft and Handling, Fraud and Forgery, Robbery and Sexual Offences</p> <p>** Detections include both Sanction Detections and Local Resolution</p>						

Inspector Lindsey Winter
 Area Inspector for Warminster Westbury Tisbury and Mere
 25th September 2011

Report to	South West Wiltshire Area Board
Date of Meeting	5 October 2011
Title of Report	Purchase of Speed Indicator Device

Purpose of Report

To propose the purchase a Speed Indicator Device (SID), to be managed by Tisbury Community Safety Partnership.

- 1.1. At the meeting of the Community Areas Transport Group (CATG) on 19 July a recommendation was made to purchase a Speed Indicator Device (SID) to supplement the equipment already held by Wiltshire Council for use in south west Wiltshire. This would deliver a 100% increase in SID deployment throughout the Areas, thereby making a significant impact on road safety.
- 1.2. The minutes of the CATG meeting are attached.
- 1.3. The equipment would be held and managed by Tisbury Community Safety Partnership (TCSP) but deployed by Wiltshire Council's Highways Department to supplement their existing schedule.
- 1.4. At the meeting of the South West Wiltshire Area Board on 24 August the recommendation was accepted in principle, pending notification of actual costs.
- 1.5. Wiltshire Council Highways Department has laid down the specification of the equipment to be compatible with existing stock. This is available from only one supplier. A breakdown of costs is attached, in the form of an invoice from that supplier. The total figure is £7,349.00 excl VAT.

Recommendation

It is recommended that the Area Board approve the purchase of a SID to be managed by TCSP and deployed by Wiltshire Council Highways Department.

Richard Munro
Community Area Manager

Appendix:

- A. CATG minutes 19 July 2011
- B. Traffic Technology invoice for SID

South West Wiltshire Area Board
Community Areas Transport Group (CATG)
14.30 Tuesday 20 September 2011
Compton Chamberlayne Village Hall
Notes

In attendance:

Cllr Tony Deane (Chair) (AD)
Cllr Jose Green
Cllr Bridget Wayman

Rachael Ashton-Brown, Wilton
Spencer Drinkwater, Principal Transport Planner (SD)
Bev Ford, Tisbury Community Safety Partnership (BV)
Tom Gardner, Senior Engineer (TG)
Tony Phillips, Fovant (AP)
Clive Upton, Dinton
Steve Wilson, Divisional Highways Manager (SW)
Tracy Morris, Highways Technician (TM)

Apologies:

Charles Smith (Dinton)
Richard Munro (CAM)

1. Notes of previous meeting were used as a basis for the Agenda
2. **LTP Area Board Substantive Highway Scheme.** SD reported that the bid for the pedestrian crossing on the A30 at Ludwell had been submitted, he was not hopeful of a satisfactory outcome as many schemes in the North scored higher in the assessment.
3. **Current priorities - Work completed or in Progress**
 - a. Tuckingmill. There has been feedback from West Tisbury PC concerning the Tucking Mill modification. SW tabled photographs showing that the last of the three bollards has been hit by vehicles. Agreed that TG will contact J Amos the Clerk to arrange a site meeting especially as the residents feel that the objective has been achieved and vehicles are now slower going down the hill.
 - b. Ansty Road Bridge. The false footpath is so successful that the schoolchildren have asked for the path to be continued on SWT property towards the station. TG to contact SWT.
 - c. The Bishopstone Crossing Facility design work has been completed and drawings sent to the PC for comment Construction is expected to start 5 October 2011.
 - d. The TRO for the Salisbury Street, Mere, works has been advertised. There were no objections. Work should be completed early October.
4. **Review of scheme requests in the Mere, Tisbury and Wilton Community Areas**
 - a. Fingerposts.
The CAM had only received responses from Sedgehill & Swallowcliffe. Councillors advised that other requests are in the pipe line.

Action. The CAM is to write to all applicants offering them an Area Board Grant of 50% of the cost to a ceiling of £350 for one fingerpost this financial year. The fingerpost must comply with the Wiltshire Council specification which will be issued with the grant advice.

Action. Councillor Wayman is to seek information on local apprentices manufacturing finger posts. The outcome of this inquiry will be taken into account when PC's are advised where to purchase the fingerposts etc from.

b. Dinton Refuge Island.

This has been investigated. A preliminary modification removing the refuge island will be actioned shortly as there is evidence of vehicles striking the island which might be an unnecessary safety risk. Costs are likely to be borne by the main Highways budget, not the CATG.

c. Wilton Centre Traffic Lights.

TG has discussed the problem with the Traffic Lights Engineer who expressed concern that the requested change would decrease the junction capacity. This was debated at length when it was learned that the lights are already programmed to give priority to traffic flows at different times of the day. It was agreed to leave the lights phasing etc in the hands of the experts. The proposal to add a pedestrian crossing has been cancelled.

d. Netherhampton B3094.

Further investigation of the problem by **TG** revealed that it is an overtaking issue on the B3094. He tabled a plan showing a proposal for 'ladders' in the road at each junction. There was a debate about cats eyes and agreed subject to falling foul of advised 'best' practice that the cats eyes should be left along the centre of the road. It was subsequently agreed that this is a priority scheme for the CATG. The Parish Council will be consulted and followed up by **Cllr Jose Green**.

e. Mere Lynch Close.

Cllr George Jeans and Mere Parish Council have yet to clarify details.

f. Wilton Yellow Lines.

TG tabled a plan showing 5 key points. The extent of Wiltshire Town Council's support for the proposals is not clear.

Action. As the TRO is the most expensive element of the scheme the CAM is to write to Wilton Town Council requesting £2,500 being 50% of the cost. Noted other TRO's have not been funded from the £17K CATG budget.

Agreed that **TG** would draw up a scheme as soon as possible to cover all 5 aspects, this to be submitted via Wilton Town Council for public consultation and approval before the TRO is published.

g. Hindon Lane, Tisbury

Ceri Flower is drawing the detailed scheme for no parking, extended 30mph and the table at the new junction to the Hindon lane Estate. It is likely that these works will be funded by the development.

h. Speed Indicator Devices (SIDs)

BF has provided a proforma invoice to the CAM for a cheque to be issued. The authorisation of the amount is under discussion. It will be cleared at the Area Board Meeting on 5 October, latest. It was pointed out that a quorate group of AB Councillors was present at this meeting and that no problems were anticipated.

This SID will be deployed in the smaller villages to:

- a) Count Traffic
- b) Check speeds (both a) & b) downloadable)
- c) Used to deter speeding motorists.

After initial pilots to prove the process, the SID will be available for the Community Areas outside the TCSP area. The cost of attendance etc on the equipment is recognised to be an AB cost (about £2,200 pa).

i. Zeals Dropped Curb

This matter would be converted to a formal Issue and Highways asked by the CAM to progress it accordingly - as should any other requests for dropped kerbs in the Community Areas.

5. Other highway issues

a. Fovant Crossroads on A30

This has been reviewed by TG who tabled photographs showing the proximity of drivers to the bend before the existing chevrons can be seen and his proposal to locate a new chevron. After debate it was agreed that the affect of the revised 30mph speed limit should be measured before any further works are considered.

6. Any Other Business

a. Road Nameplates

SW explained that where it is simply screwing new nameplates on to old posts that this can be done and nameplates will be provided by WC.

If new posts etc are involved it will be necessary for notices to be issued to check on other underground services.

b. Machine white lining

SW reported that white lines are allowed to wear out in built up areas. There are two teams restoring white lines: the machine team and the hand team.

SW will let the CATG members have a copy of the job list. It was emphasised that the list is not ordered.

c. Road Signs

Lack of funding suggests that posts will only be replaced when they no longer support the signs.

d. Winter Salt

SW will confirm. However he was of the opinion that the bags of salt would be rolled out to the Parishes from 1 October.

7. Date of Next Meeting

14.30 Tuesday 22 November 2011 at a venue, to be decided, that will have WiFi

Tisbury Community Safety Partnership
Tisbury Parish Council
The Castle, Broadwater
Donhead St. Andrew,
Nr. Shaftsbury, SP7 9LG

Your Order ref: Bev Ford

Item	Description	Qty	Unit Price	Total
	DSD SMILEY SID - SPEED INDICATOR DEVICE - NEWCOM - BLUETOOTH			0.00
TT-2.0002	DSD Pro SID with Bluetooth Connection - Battery Powered Kit Measuring & Displaying Vehicle Speeds Including: DSD Pro 2.5 Digit Speed Display Reflective Frame "YOUR SPEED" Bluetooth Integration Power Pack Complete 3 Step Charger 12volt UK Anti Theft Bracket Large and Padlock Internal Memory 512K Safety Function Operators Manual	1	3,755.00	3,755.00
TT-2.0104	Anti theft installation bracket - large inc padlock	20	125.00	2,500.00
TT-2.0102	Power Pack for anti theft bracket large inc 12v-18Ah Battery, Battery Cable, Cover	2	96.00	192.00
TT-3.3003	Tamtorque Sign Band 70mm - 100mm Dia TTK100	40	4.80	192.00
TT-3.3007	Tamtorque Driver - Hand	1	10.00	10.00
TT-2.3106	Data Retrieval Device with Bluetooth - Palm T5 Supplied complete with Software on SD Card	1	250.00	250.00
TT-4.1001	Delivery and Training in the use and application of SID. Includes hardware/software training	1	450.00	450.00

Terms: Pro forma - Payment in advance

Subtotal GBP 7,349.00

Traffic Technology Ltd
t: +44(0) 1280 847711
f: +44(0) 1280 847719
sales@trafficechnology.co.uk

VAT Total GBP 1,469.80

Total Payable GBP 8,818.80

Bank Details
Bank: [REDACTED]
Branch: [REDACTED]
Sort Code: [REDACTED]
Account No: [REDACTED]



Report to	South West Wiltshire Area Board
Date of Meeting	5 October 2011
Title of Report	Community Area Grants

Purpose of Report

To request that Councillors consider three applications seeking Community Area Grant Funding.

1. Background

- 1.1. Area Boards have authority to approve Area Grants under powers delegated to them by the Deputy Leader and Cabinet member for Community Services (27 February 2010). Under the Scheme of Delegation Area Boards must adhere to the Area Board Grants Guidance for funding.
- 1.2. The 2011/12 funding criteria and application forms are available on the Council's website (www.wiltshire.gov.uk/areaboards) or paper versions are available from the Community Area Manager.

Background documents used in the preparation of this Report	<ul style="list-style-type: none">• Community Area Grant Application Pack 2011/12
--	---

2. Application SWW 15-11

Applicant	Project proposal	Funding requested	Matched by Applicant
Semley Village Stores	Start-up Costs	£5,000	£80,850

- 2.1. The full application is attached
- 2.2. The application meets grant criteria 2011/12
- 2.3. The application demonstrates links to the Community Plan
- 2.4. The application meets Wiltshire Council priorities
- 2.5. Summary details about the applicant:
Not for profit Community Shop
- 2.6. Summary details about the project:
To establish a community shop in the village

3. Application SWW 20-11

Applicant	Project proposal	Funding requested	Matched by Applicant
Wessex Community Action	Sunshine Support Group support costs	£1,000	£5,282

- 3.1. The full application is attached
- 3.2. The application meets grant criteria 2011/12
- 3.3. The application demonstrates links to the Community Plan
- 3.4. The application meets Wiltshire Council priorities
- 3.5. Summary details about the applicant:

Wessex Community Action is a charity offering support services to voluntary and community groups. Sunshine Support Group is a programme run by them in the Tisbury area.

- 3.6. Summary details about the project:

The Sunshine Support Group provides support for older, isolated people living in a very rural part of Wiltshire. The group provides an opportunity for people to meet others, get help and advice on problems that affect their lives. The group aims to increase the social inclusion of isolated elderly people who would otherwise not be reached.

4. Application SWW 21-11

Applicant	Project proposal	Funding requested	Matched by Applicant
Mere Bowls Club	Provision of secure equipment storage	£900	£900

- 4.1. The full application is attached
- 4.2. The application meets grant criteria 2011/12
- 4.3. The application demonstrates links to the Community Plan
- 4.4. The application meets Wiltshire Council priorities
- 4.5. Summary details about the applicant:
Mere Bowls Club is a not-for-profit community sports club
- 4.6. Summary details about the project:
To provide secure storage for expensive machinery to enable expansion and development of bowls in Mere.

Financial Implications

4.7. If the grants are awarded in line with applications, the Area Board will retain a discretionary funds balance of **£110,068**:

- **£36,674** for the Mere Community Area
- **£38,482** for the Tisbury Community Area
- **£34,912** for the Wilton Community Area

Report Author	Richard Munro, Community Area Manager Tel: 01722 434211 E-mail richard.munro@wiltshire.gov.uk
----------------------	---

SOUTH WEST WILTSHIRE AREA BOARD

Item No. XX

Please note: this is a working document which is subject to change due to availability of relevant Officers/Partners and relevant time scales.

Date	Cabinet Member Attending	Location	Area Board Agenda Main Items
7 December 2011	Cllr John Noeken	Wilton Community Centre	<ul style="list-style-type: none"> • Fortnightly Refuse Collection Service • Fees and Charges Policy <p>Standard items including Partner and Parish Council Updates, Local Issues and Community Area Grants.</p>
15 February 2012	Portfolio Holder	Grove Buildings Mere	<p>Standard items including Partner and Parish Council Updates, Local Issues and Community Area Grants.</p>
11 April 2012	TBC	Charlton Remembrance Hall	<p>Standard items including Partner and Parish Council Updates, Local Issues and Community Area Grants.</p>

Community area manager: Richard Munro (Richard.munro@wiltshire.gov.uk)

Democratic services officer: Lisa Moore (lisa.moore@wiltshire.gov.uk)

Service director: Graham Hogg (graham.hogg@wiltshire.gov.uk)

